

# Silvaflame-Cleervue Co Ltd

## DRILL GUARD BP/2

### DESCRIPTION

This Cleervue Drill Guard is made of 2mm Steel with 5mm Polycarbonate moulded body and 4mm visors making it very impact resistant.

The adjustable visor protects the operator from contact with the spindle, drill chuck and cutting bit before, during and after the drilling operation.

The guard is easily opened to the left, allowing quick bit changes. Guards locks securely in place with a spin loaded clip or interlock.

Guards include a depth adjustment knob, allowing operator to adjust guard position, making drilling operation easier.

The guard comes with mounting clips up to 100mm.

The BP/2 has a Min depth of 125mm and max of 200mm.

### UNPACKING

Check for shipping damage. If damage has occurred, a claim must be filled with carrier. Check for completeness. Immediately report missing parts to supplier.

### SAFETY RULES

**Warning:** for your own safety, read all of the instructions and precautions before operating tool.

**Caution:** always follow proper operating procedures as defined in this manual - even if you are familiar with use of this or similar tools. Remember that being careless for even a fraction of a second can result in severe personal injury.

### ASSEMBLY

The guard will come completely assembled ready to be fitted to your machine.

### INSTALLATION

This guard attaches to the back pillar with a jubilee clip, so fitting is a very fast and simple job.

The guard can also be fixed to the side of the head with the side attachment bracket.

It just requires 4 holes to be drilled and taped in an approximate position.

Once this is attached the guard can be move on the bar left and right as well as up and down to get the best placing.

On the interlocked guards, the interlock needs to be wired into the machine by a trained professional.

**Important:** Check to be sure the clamp is tight and will not slide or rotate on the back pillar.

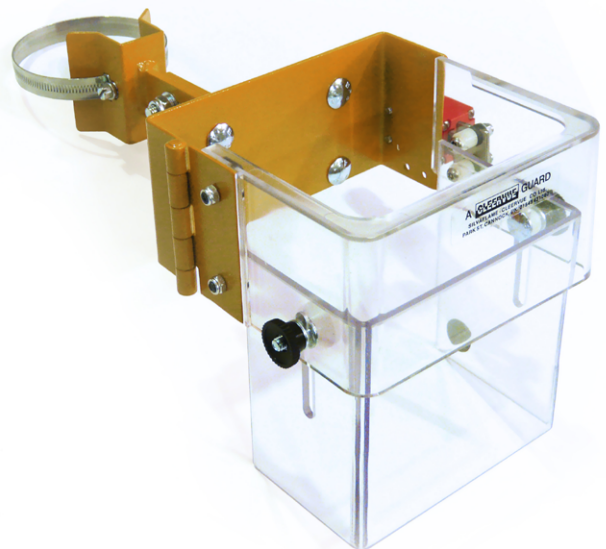
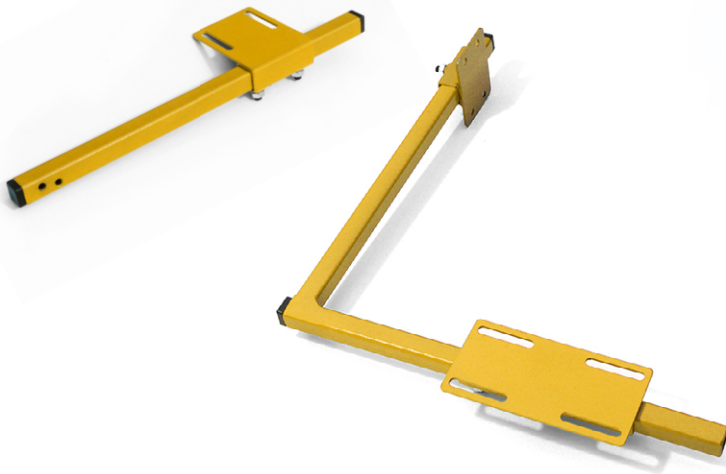
The visors should be replaced every 3 years and should be checked every day before use for signs of cracking or weakening.

Some coolants and cleaners are known to weaken polycarbonate so please check with your supplier before use.

### OPERATION

This guard is easily used on many different jobs, the visor adjusts up and down to allow access if needed.

The guard opens easily with just a spring clip on the right side on manual models and the interlock hold it closed on the interlocked option.



**For additional technical information or spare parts - Please contact us, we will be happy to help**

**SILVAFLAME-CLEERVUE COMPANY LIMITED**

22, Park Street, Bridgtown, Cannock, Staffordshire, WS11 0BX. UK

**T: 01543 431060 F: 01543 509140**

**e-mail: enquiries@silvaflame.com / silvaflame@cleervue.com**

**Manufacturers of MACHINERY SAFETY GUARDS**



British made for  
over 70 years

