

Silvaflame-Cleervue Co Ltd

MILLER CUTTER GUARD

DESCRIPTION

This Cleervue Milling Guard is made of 2mm Steel Frame with 5mm moulded body 4mm Polycarbonate visors making it very impact resistant.

The guard easily opens allowing access to change tools.

The lower visor adjusts so you can enclose the working area to stop swarf.

UNPACKING

Check for shipping damage. If damage has occurred, a claim must be filled with carrier. Check for completeness. Immediately report missing parts to supplier.

SAFETY RULES

Warning: for your own safety, read all the instructions and precautions before operating tool.

Caution: always follow proper operating procedures as defined in this manual - even if you are familiar with use of this or similar tools.

Remember that being careless for even a fraction of a second can result in severe personal injury.

ASSEMBLY

The guard will come completely assembled ready to be fitted to your machine.

INSTALLATION

The Miller Cutter attaches to the head of the miller by means of pinch screws/bracket.

Simply place the guard over the head of the miller and tighten the pinch screws evenly onto the head.

On the interlocked guards, the interlock needs to be wired into the machine by a trained professional.

The guard can also be fixed to the side of the head with the side attachment bracket. It just requires 4 holes to be drilled and taped in an approximate position.

Once this is attached the guard can be move on the bar left and right as well as up and down to get the best placing.

Important: Make sure all bolts are nice and tight.

The visors should be replaced every 3 years and should be checked every day before use for signs of cracking or weakening.

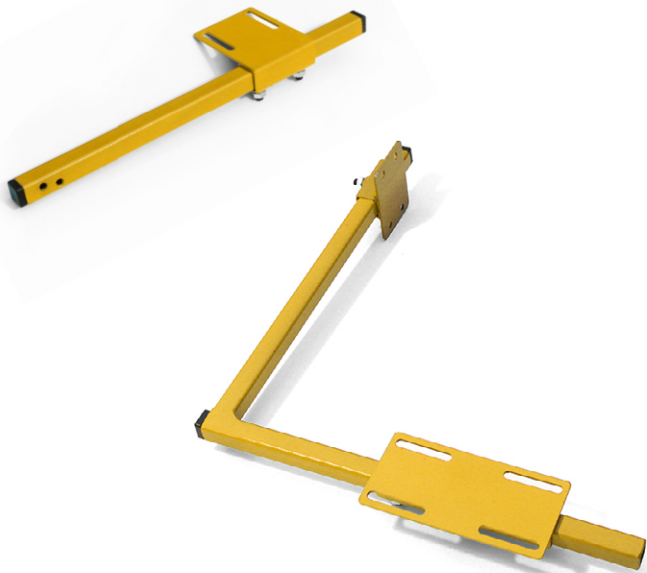
Some coolants and cleaners are known to weaken polycarbonate so please check with your supplier before use.

OPERATION

The Miller Cutter Guard opens with a latch on the right-hand side of the guard.

The visor can be adjusted up and down to allow for working on different jobs.

The machine will stop once the guard is opened on the interlocked option.



For additional technical information or spare parts - Please contact us, we will be happy to help

SILVAFLAME-CLEERVUE COMPANY LIMITED

22, Park Street, Bridgtown, Cannock, Staffordshire, WS11 0BX. UK

T: 01543 431060 F: 01543 509140

e-mail: enquiries@silvaflame.com / silvaflame@cleervue.com

Manufacturers of MACHINERY SAFETY GUARDS



British made for
over 70 years

